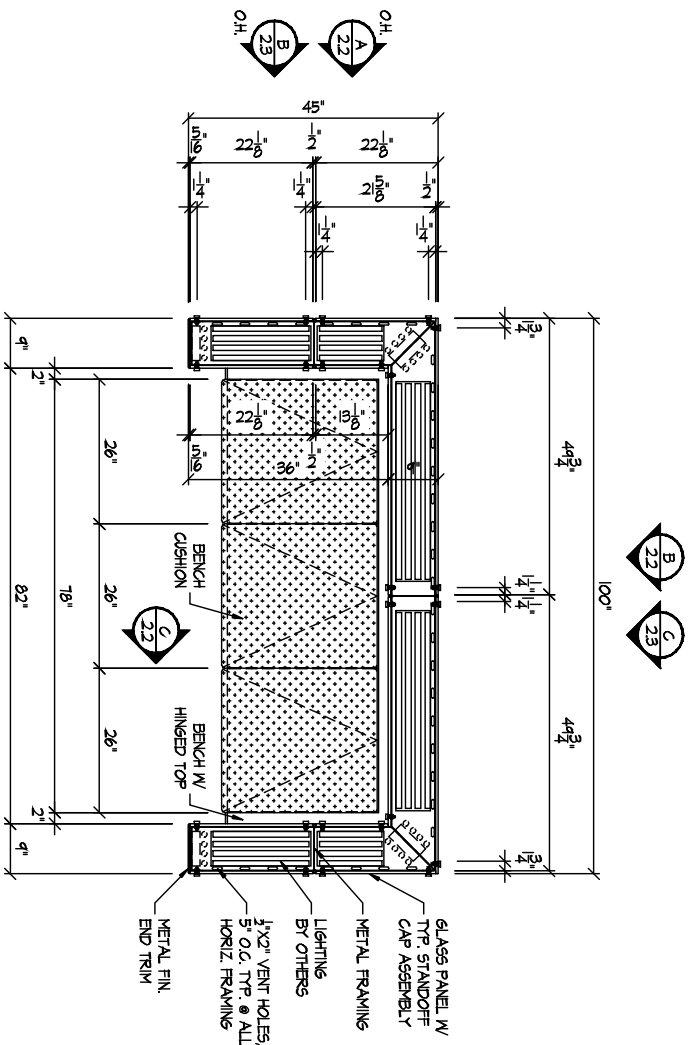


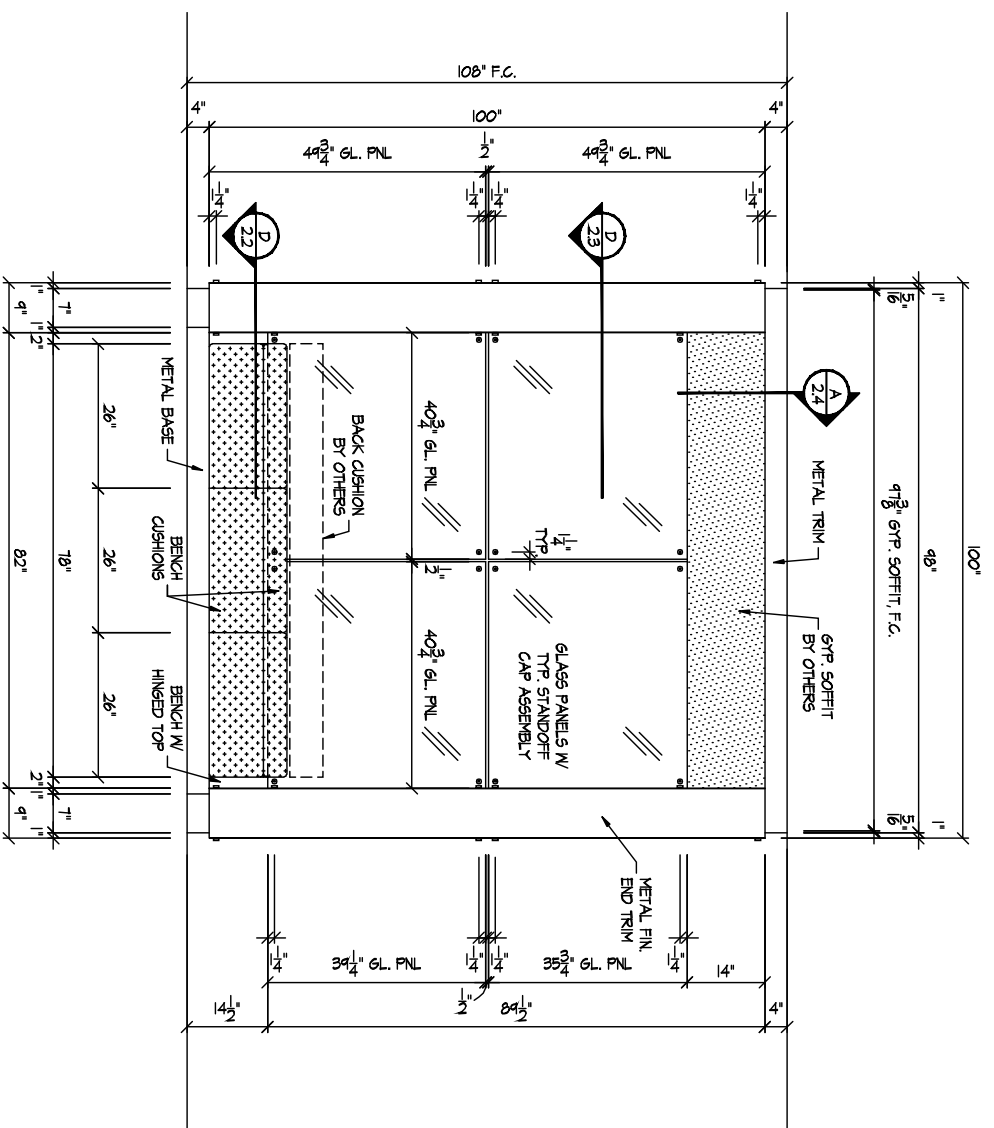
**B REFLECTED CEILING PLAN**  
 SCALE: 3/4"=1'-0"  
 AT NIGHT CLUB SETTEE  
 ARCH. REF. JNH18-1403A

NOTE: REFLECTED CEILING PLAN DEFICITS GYP. SOFFIT. SETTEE WAS OMITTED FOR CLARITY. DASHED LINES INDICATE EXTENTS OF SETTEE FOR COORDINATION ONLY.



**A PLAN**  
 SCALE: 3/4"=1'-0"  
 NIGHT CLUB SETTEE  
 ARCH. REF. JNH18-1403A

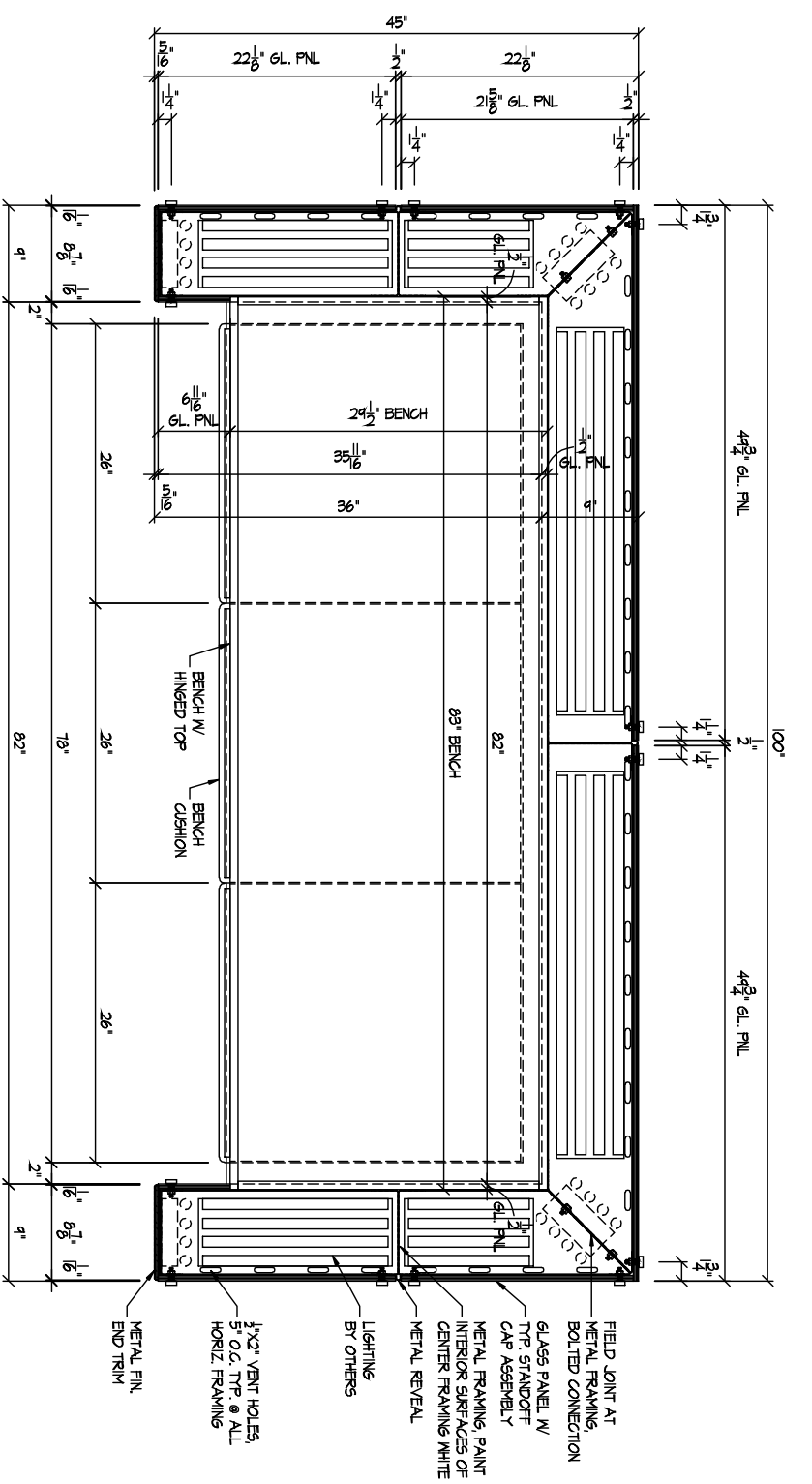
- MATERIAL -** Bench, 3/4" VDO (SHOP PAINTED)  
 Bench Cushions, TUFTEED SEAT CUSHIONS  
 Surround Panels, 1/2" GLASS (GL-401) PANELS  
 Surround Framing, 1/2" GA. BREAK FORMED METAL (MTL-400) CHANNEL AND STRAPPING  
 Surround Revealed Material, 1/2" GA. BREAK FORMED METAL (MTL-400)  
 Surround Base and Trim, 1/2" GA. METAL (MTL-400) ON 1/2" BACKER AS REQUIRED
- FINISH -** Paint, SHOP PAINTED WHITE  
 Bench Cushions, ARCH TO PROVIDE UPHOLSTERY SELECTION  
 Glass (GL-401), FILP, FROSTED TEMPERED GLASS, REF: #6044-2  
 Metal (MTL-400), STAINLESS STEEL, W/ POLISHED FINISH



**C ELEVATION**  
 SCALE: 3/4"=1'-0"  
 NIGHT CLUB SETTEE  
 ARCH. REF. JNH18-1403A

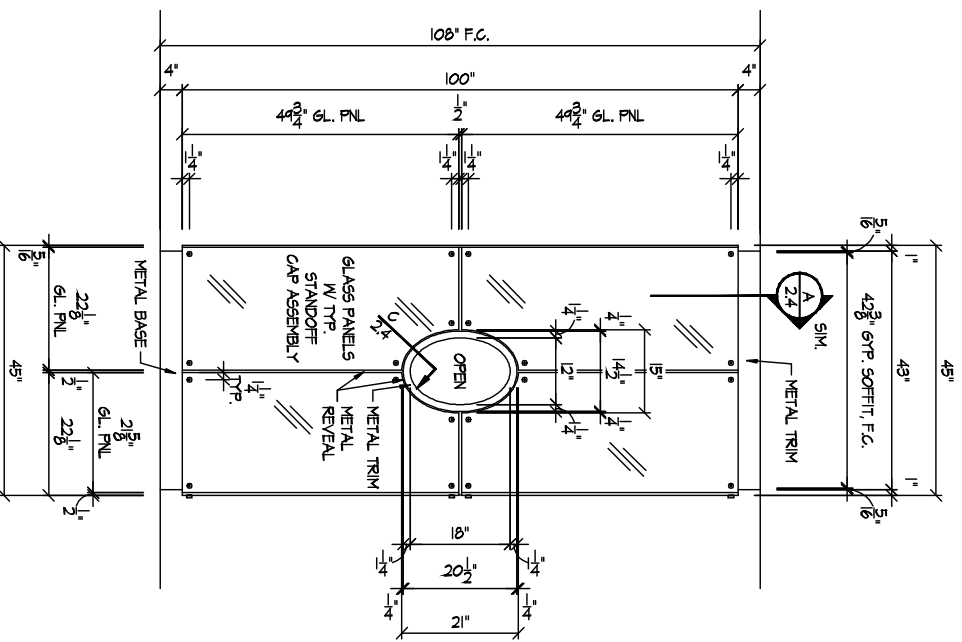
HARDWARE LIST		
NO. REQ'D.	DESCRIPTION	CATALOG NO.
336 pcs	41" STANDOFF CAP W/ STUD	4" STANDOFF SYSTEMS CAP 4
1008 pcs	47/8" X 1/32" NUTRENRE WASHER	4" STANDOFF SYSTEMS HD-NW075
20 LF	BUSHING	4" STANDOFF SYSTEMS HD-P73
336 pcs	5/16-18 ST. STEEL NUT	4" MASTER-CARR #16-47A030
5 pcs	1-1/2" PLANO HINGE	STANLEY #314

\* ADDITIONAL INFORMATION ON STANDOFF SYSTEMS HARDWARE CAN BE OBTAINED BY PHONE AT 775.824.1212, ONLINE AT [www.standoffsystems.com](http://www.standoffsystems.com) OR BY EMAIL AT [info@standoffsystems.com](mailto:info@standoffsystems.com).



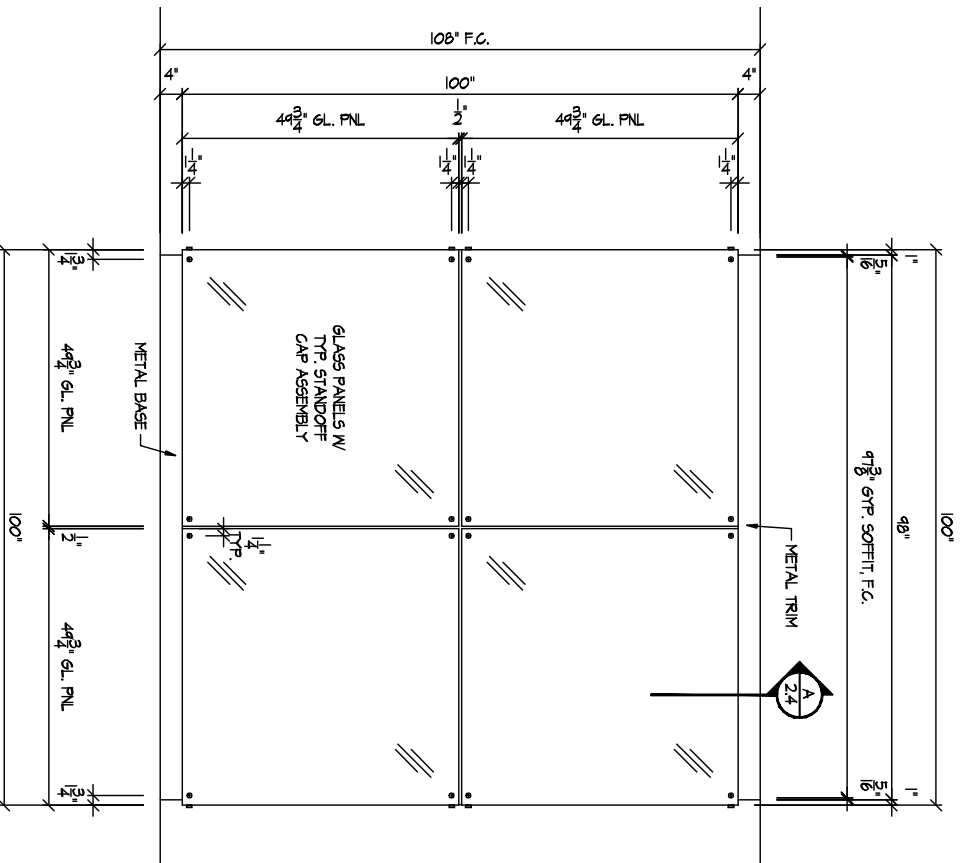
**(D) PLAN SECTION**  
SCALE: 1/2" = 1'-0"

ARCH. REF. NONE



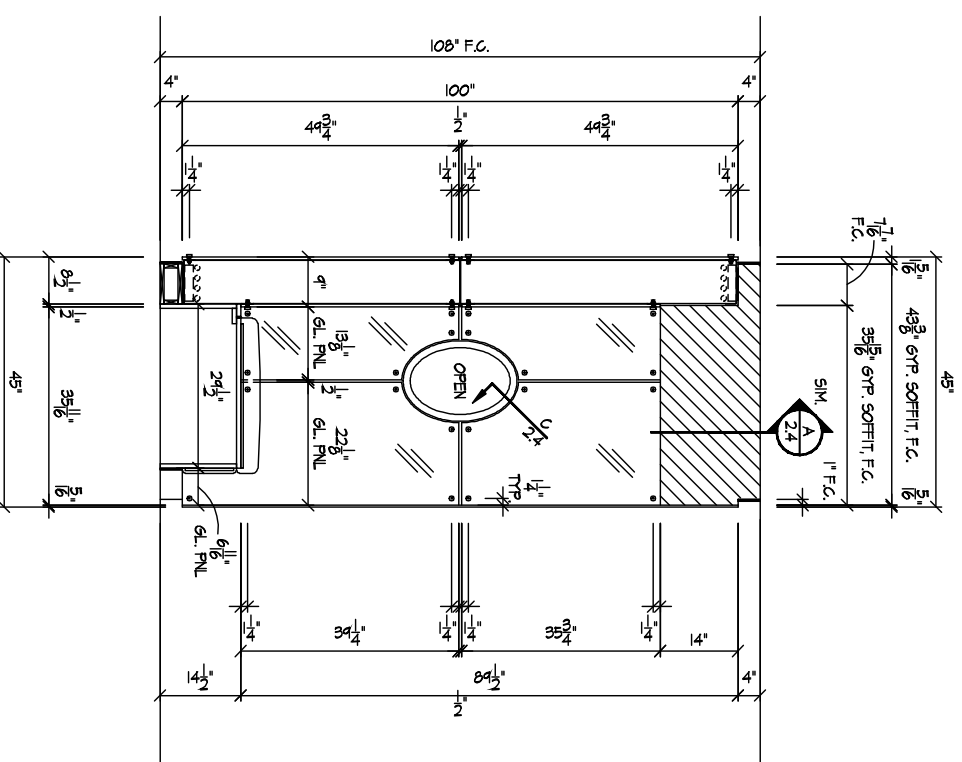
**(A) ELEVATION**  
SCALE: 3/4" = 1'-0"

ARCH. REF. INH-18-N-03A



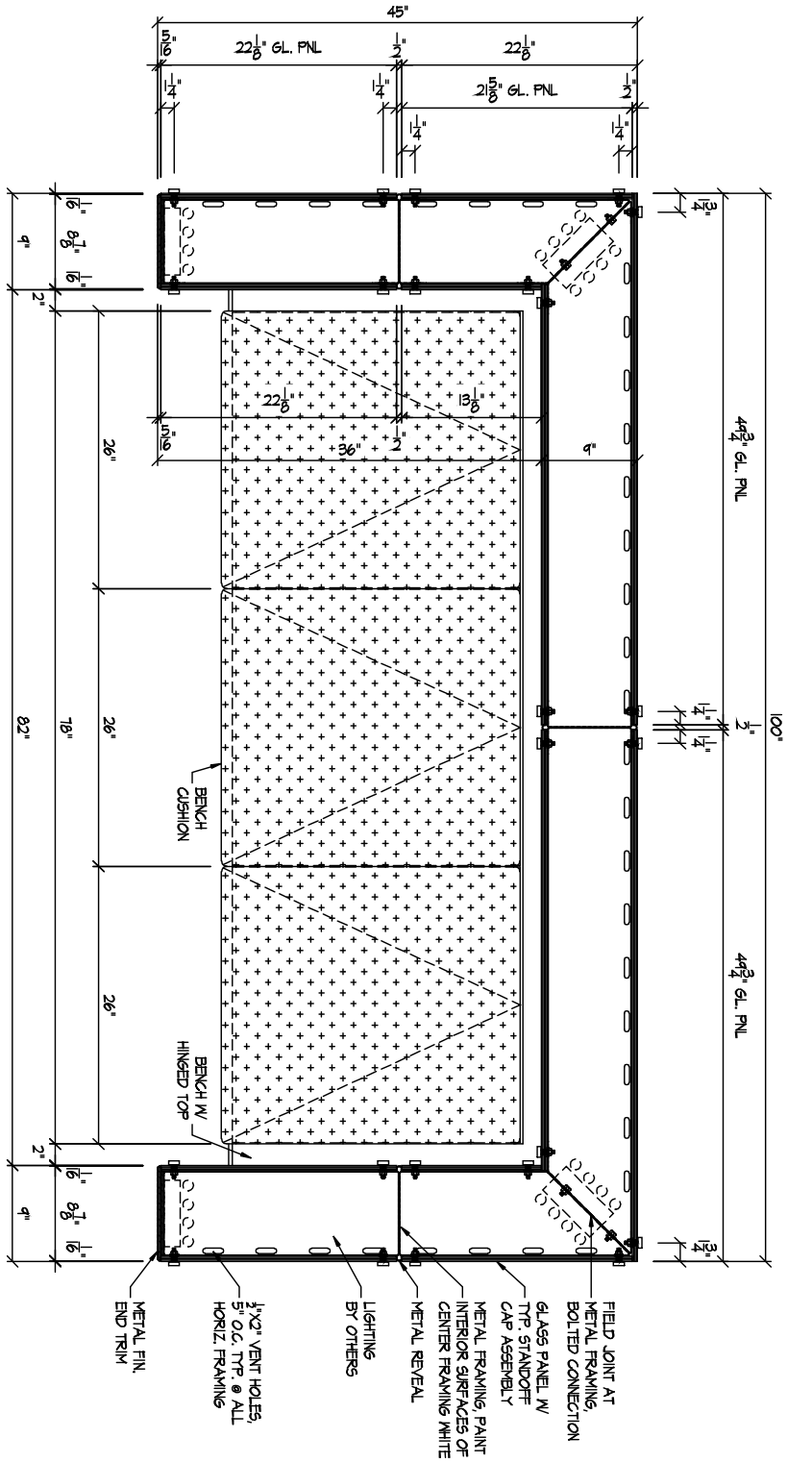
**(B) ELEVATION**  
SCALE: 3/4" = 1'-0"

ARCH. REF. INH-18-N-03A



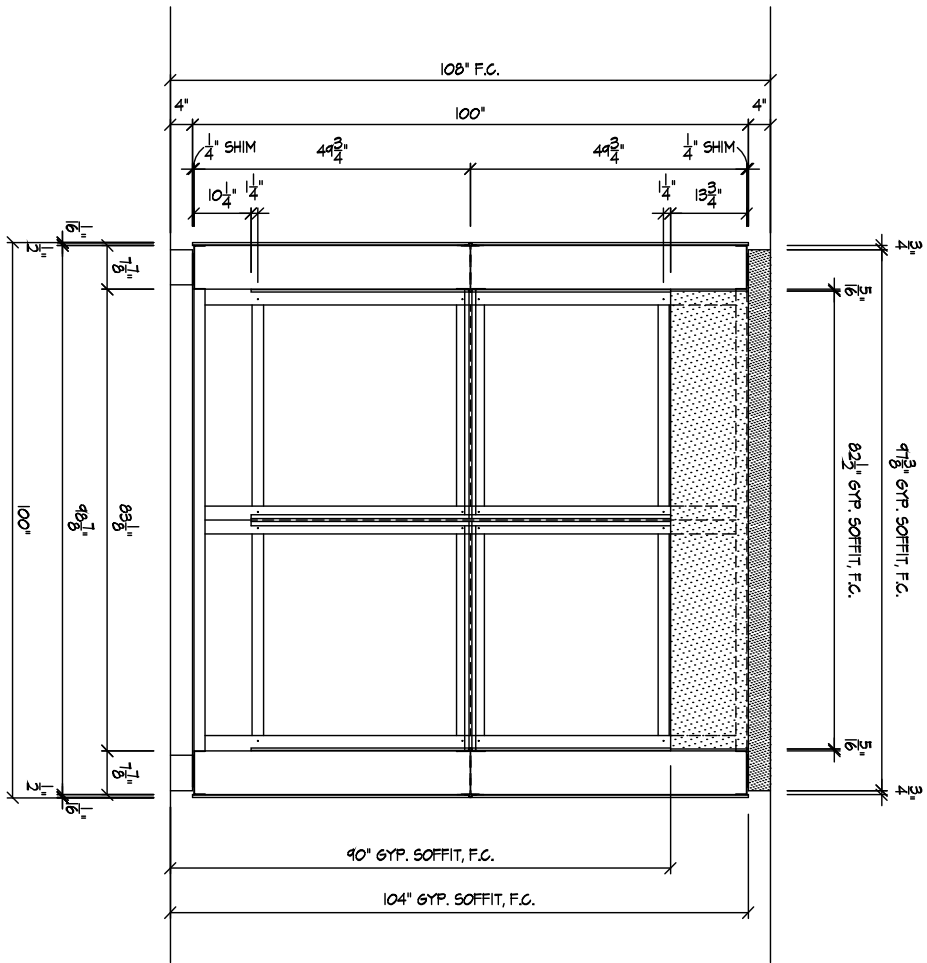
**(C) ELEVATION**  
SCALE: 3/4" = 1'-0"

ARCH. REF. INH-18-N-03A



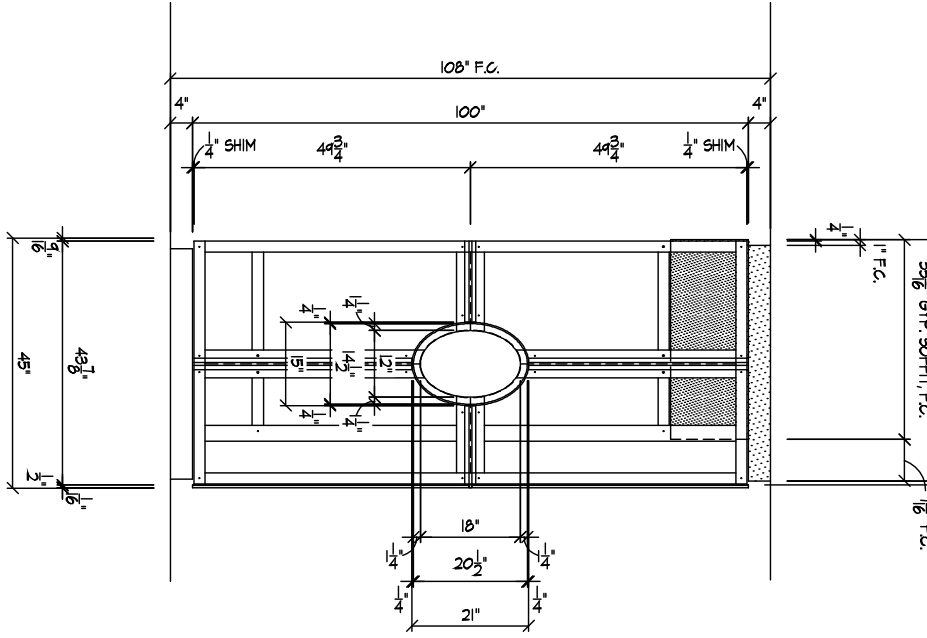
**D PLAN SECTION**  
SCALE: 1/2"=1'-0"

ARCH. REF. NONE



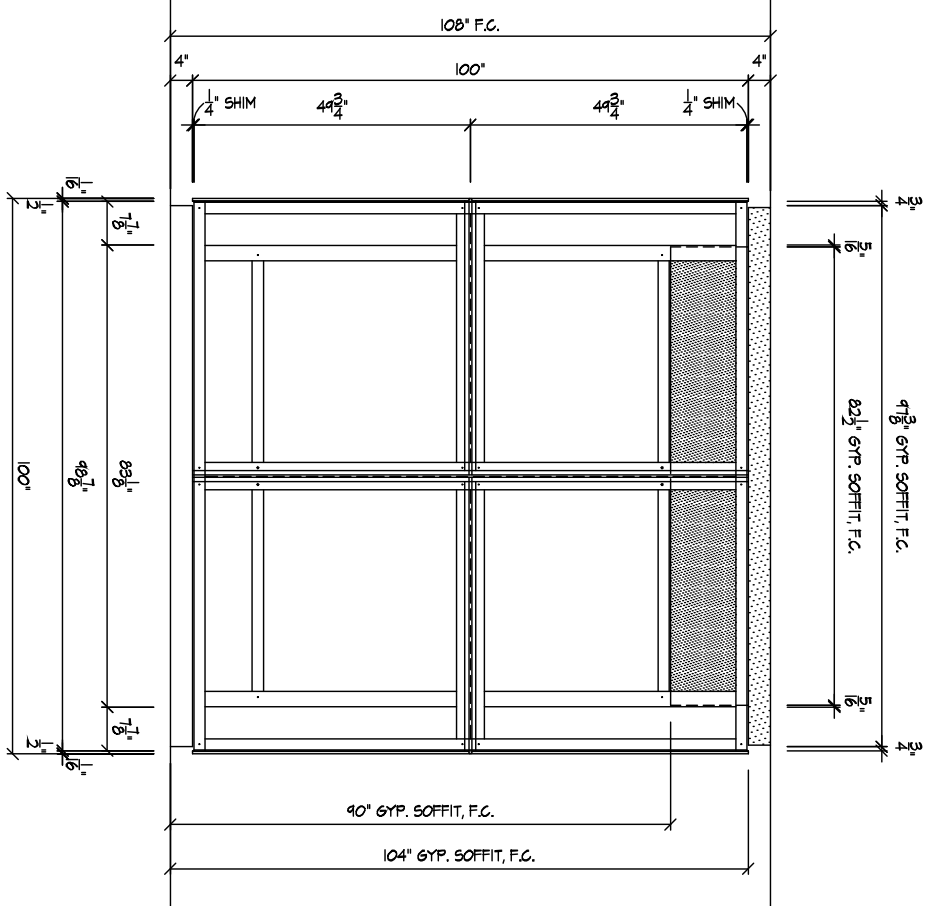
**A ELEVATION**  
SCALE: 3/4"=1'-0"

SETTLE METAL FRAMING  
ARCH. REF. NONE



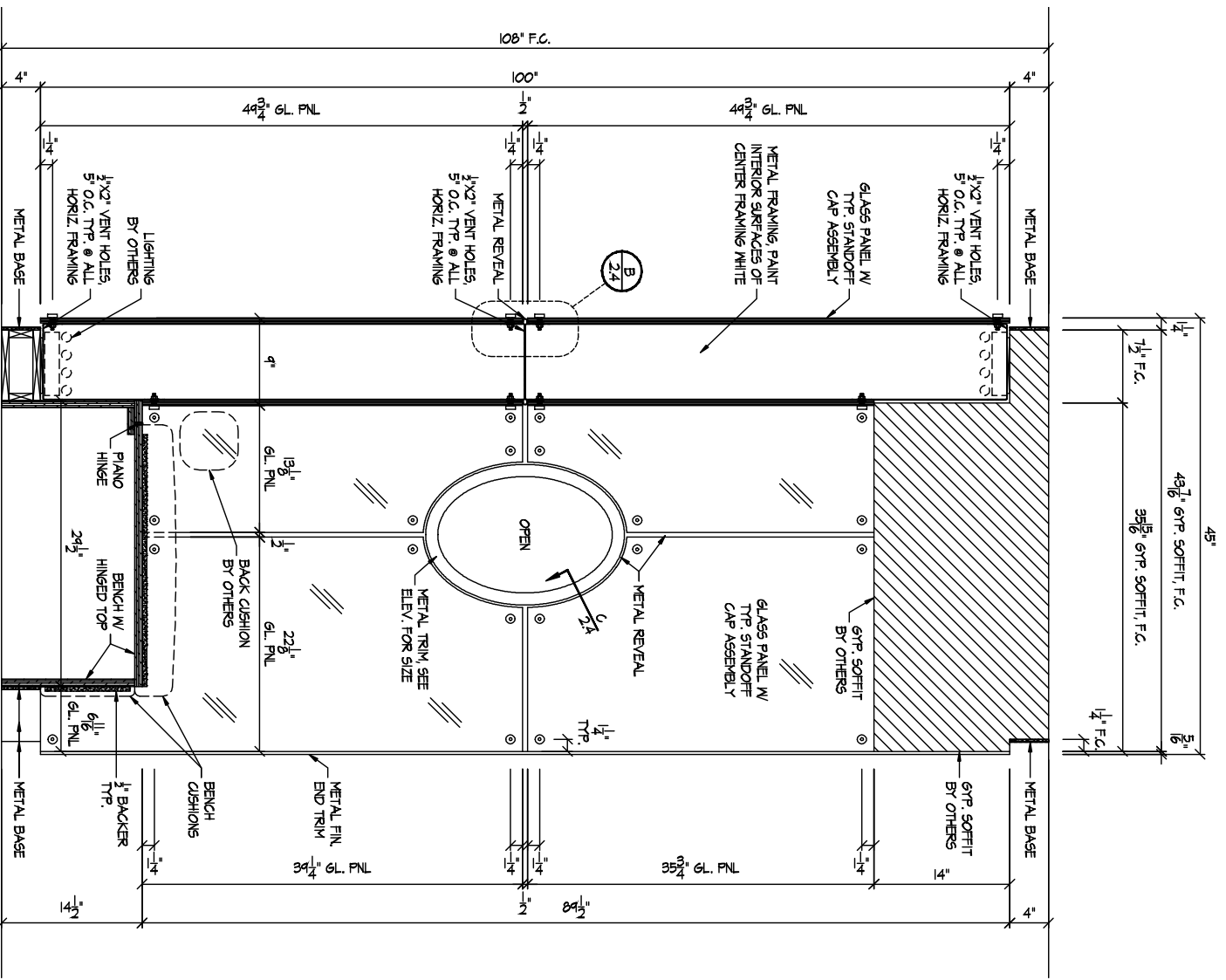
**B ELEVATION**  
SCALE: 3/4"=1'-0"

SETTLE METAL FRAMING  
ARCH. REF. NONE

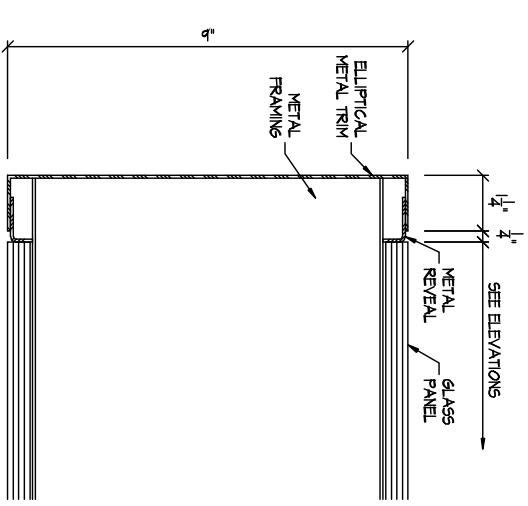


**C ELEVATION**  
SCALE: 3/4"=1'-0"

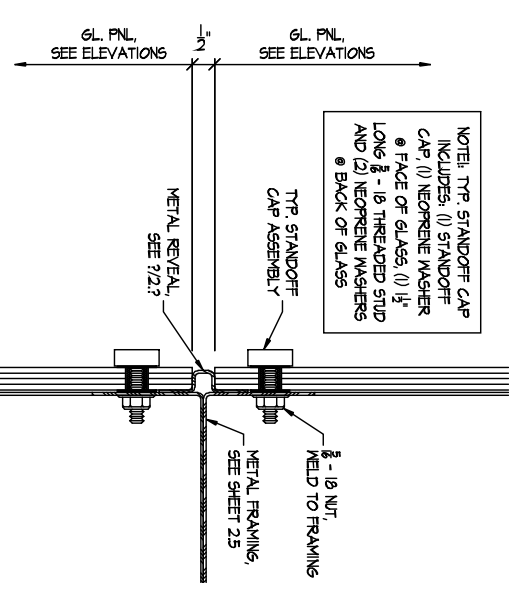
SETTLE METAL FRAMING  
ARCH. REF. NONE



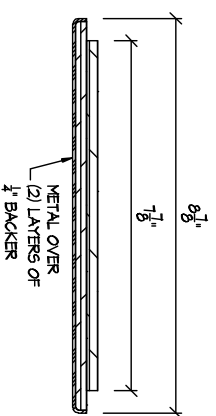
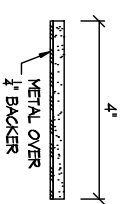
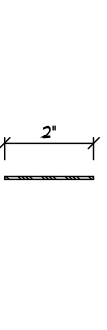
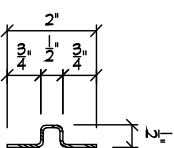
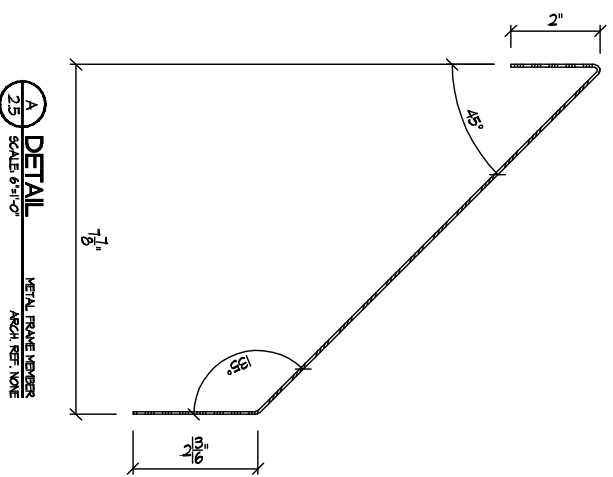
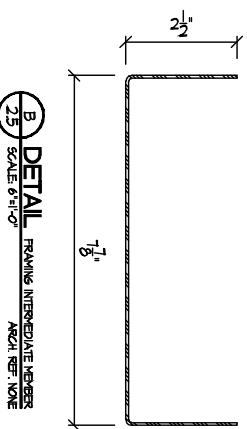
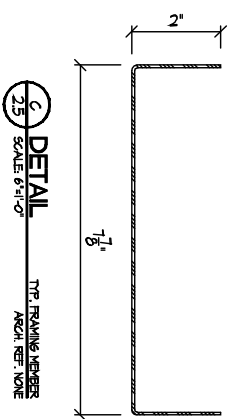
**A SECTION**  
 24 SCALE: 1/2"=1'-0"  
 ARCH. REF. 24H-18-1633A



**C DETAIL** ELIPTICAL METAL TRIM  
 24 SCALE: 6"=1'-0"  
 ARCH. REF. NONE



**B DETAIL** TYP. STANDOFF CAP  
 24 SCALE: 6"=1'-0"  
 ARCH. REF. NONE



- (4) 100" PCS REQUIRED PER UNIT  
 (5) 45" PCS REQUIRED PER UNIT  
 (12) 100" PCS REQUIRED TOTAL  
 (15) 45" PCS REQUIRED TOTAL

- (2) 100' PCS REQUIRED PER UNIT  
 (6) 100' PCS REQUIRED TOTAL